

INDEX

LINE			
BRECKENRIDGE TO MOORHEAD	1		
FARGO TO NEW ROCKFORD	2	WAHPETON TO NOLAN	
NEW ROCKFORD TO MINOT	3	Br. No. 5.2, Dwight	5
DEVILS LAKE TO SURREY	3A	Br. No. 33.6, Kindred	5
MINOT TO BAINVILLE	4		
WAHPETON TO NOLAN	5		
STANLEY TO GRENORA	6		
SNOWDEN TO RICHEY	7	STANLEY TO GRENORA	
FAIRVIEW TO WATFORD CITY	8	Br. No. 41.4, McGregor	6
BAINVILLE TO OPHEIM	9		
STRUCTURES			
BRECKENRIDGE TO MOORHEAD			
Br. No. 6.0, Lurgan	1	SNOWDEN TO RICHEY	
Br. No. 12.6, Kent	1	Br. No. 12.1, Snowden	7
FARGO TO NEW ROCKFORD		Br. No. 18.2, Newlon Jct.	7
Br. No. 6.9, Pinkham	2		
Br. No. 7.5, Pinkham	2		
Br. No. 52.6 Pillsbury	2		
Br. No. 71.1, Hannaford	2	FAIRVIEW TO WATFORD CITY	
Br. No. 72.8 Hannaford	2	Br. No. 3.2, E. Fairview	8
Br. No. 77.8, Revere	2	Tunnel No. 1A, Cartwright	10
Br. No. 93.1, Glenfield	2	Br. No. 29.9, Arnegard	8
Br. No. 123.5, New Rockford	2		
NEW ROCKFORD TO MINOT			
Br. No. 151.3, Heimdal	3	BAINVILLE TO OPHEIM	
Br. No. 153.0, Wellsburg	3	Br. No. 31.6, Medicine Lake	9
Br. No. 164.1, Selz	3	Br. No. 101.9, Scobey	9
Br. No. 167.2, Clifton	3	Br. No. 128.8, Richland	9
Br. No. 207.3, Verendrye	3		
Br. No. 225.2, Surrey	3		
Br. No. 117.6, Minot	3		
Br. No. 117.9, Minot	3	DEVILS LAKE TO SURREY	
Br. No. 118.1, Minot	3	Br. No. 105.4, Church's Ferry	3A
Br. No. 118.3, MINOT	3	Br. No. 162.6 Towner	3A
MINOT TO BAINVILLE			
Br. No. 120.6, Minot	4		
Br. No. 198.9, Tioga	4		
Br. No. 236.5, Williston	4		
Br. No. 142.1, Fort Buford	4		
Br. No. 155.1, Lakeside	4		

GREAT NORTHERN RAILWAY
MINOT DIVISION

INDEX

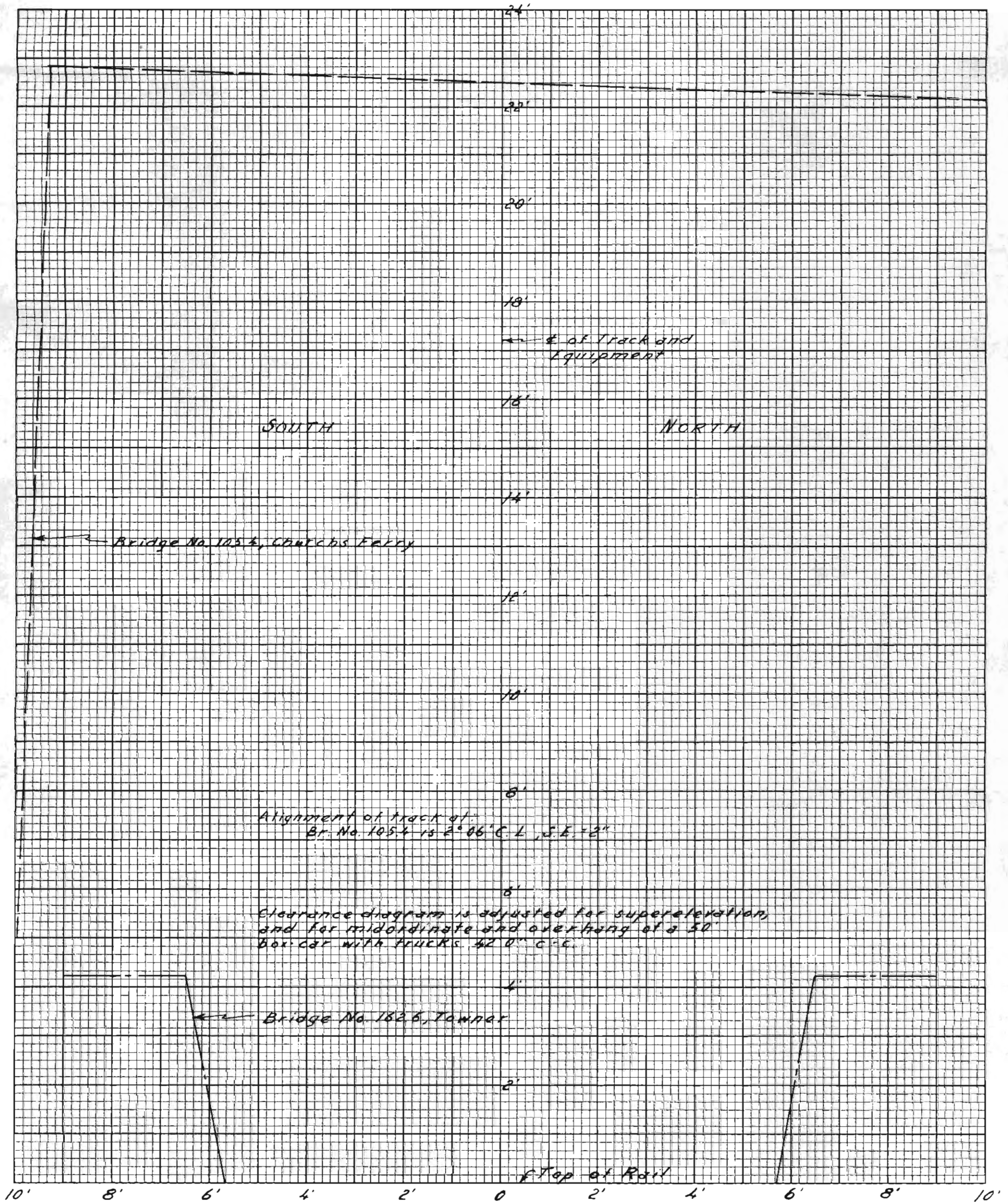
FOR
CLEARANCE DIAGRAMS

OFFICE OF CHIEF ENGINEER, ST. PAUL, MINN.

CORRECTED TO: *Nov. 1906*

DATE PRINTED

167-5959-A



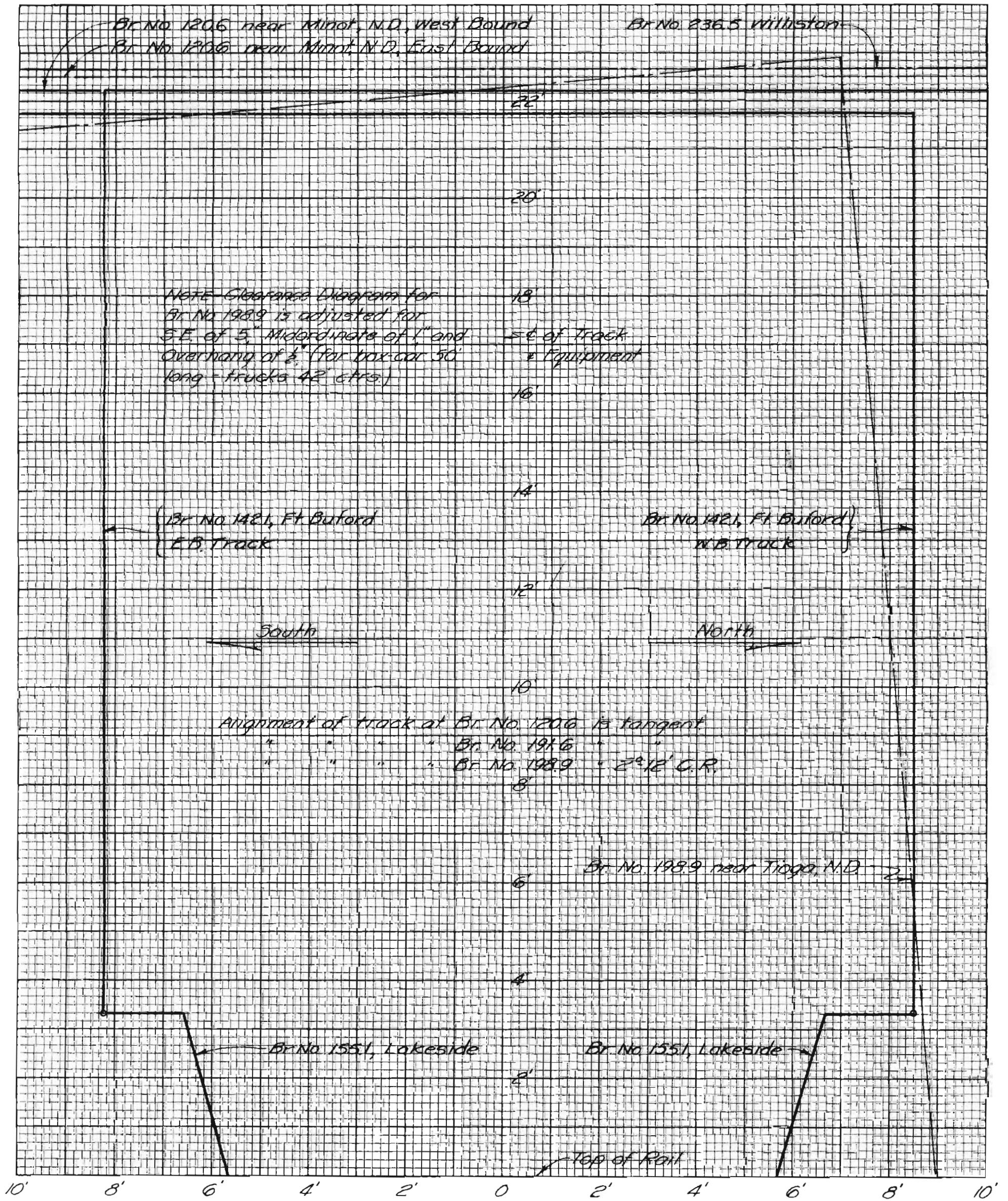
GREAT NORTHERN RAILWAY
 MINOT DIVISION
**DEVILS LAKE TO SURREY
 CLEARANCE DIAGRAM**

OFFICE OF CHIEF ENGINEER, ST. PAUL, MINN.

CORRECTED TO.....4

DATE PRINTED

167-5959-3A



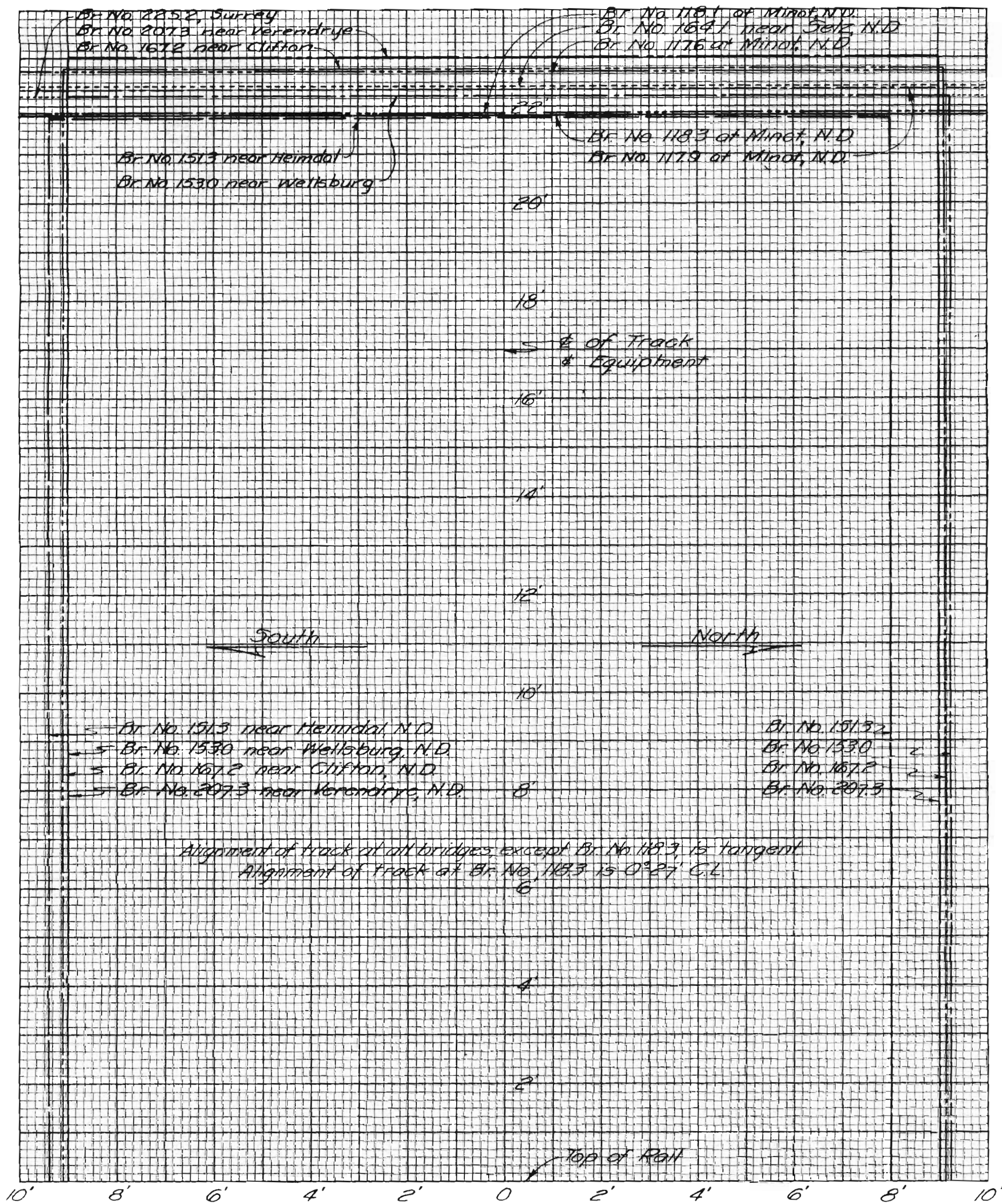
GREAT NORTHERN RAILWAY
 MINOT DIVISION
**MINOT TO BAINVILLE
 CLEARANCE DIAGRAM**

OFFICE OF CHIEF ENGINEER, ST. PAUL, MINN.

CORRECTED TO June 1961

DATE PRINTED

167-5959-4



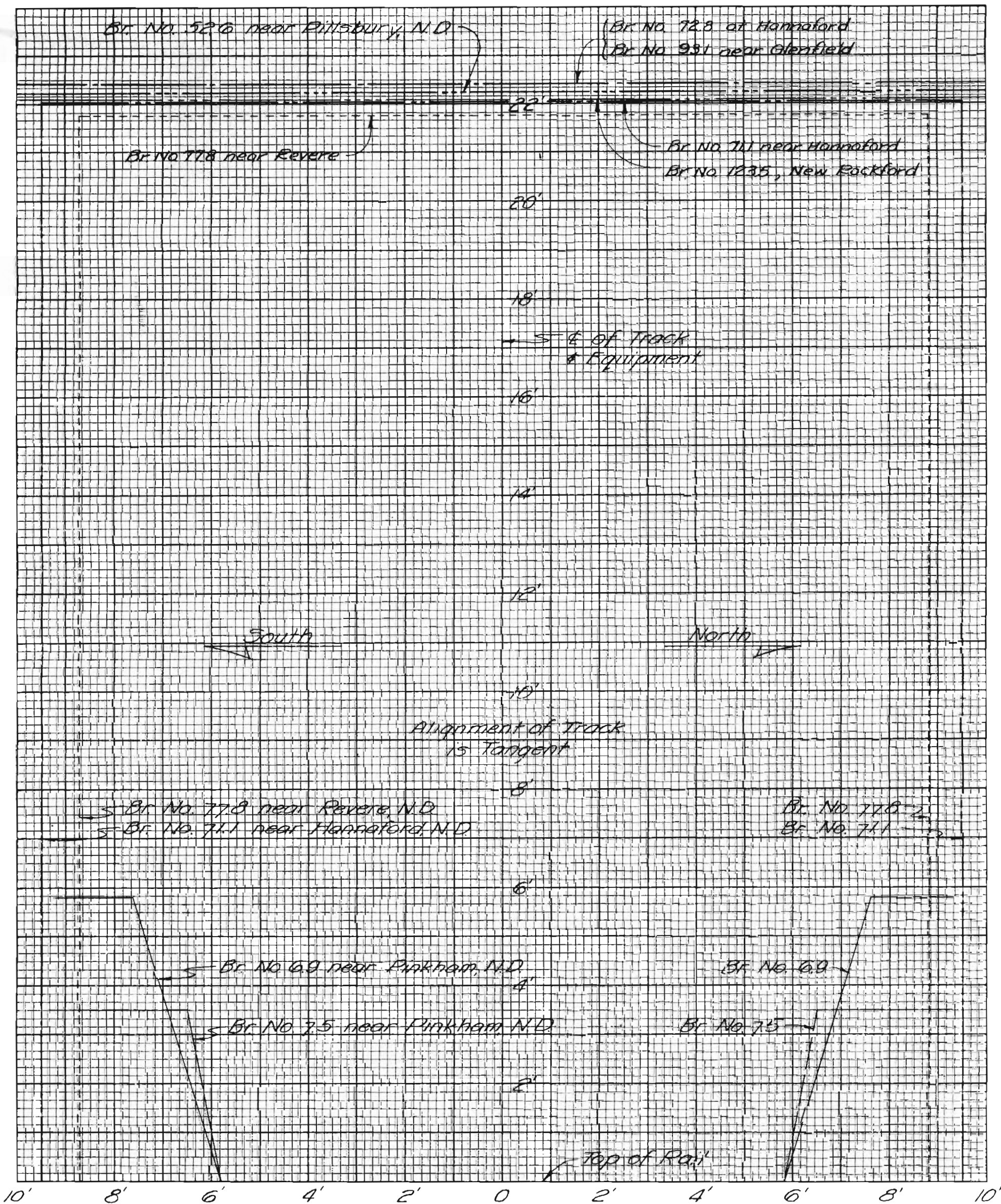
GREAT NORTHERN RAILWAY
 MINOT DIVISION
**NEW ROCKFORD TO MINOT
 CLEARANCE DIAGRAM**

OFFICE OF CHIEF ENGINEER, ST. PAUL, MINN.

CORRECTED TO 3-1966

DATE PRINTED

167-5959-3



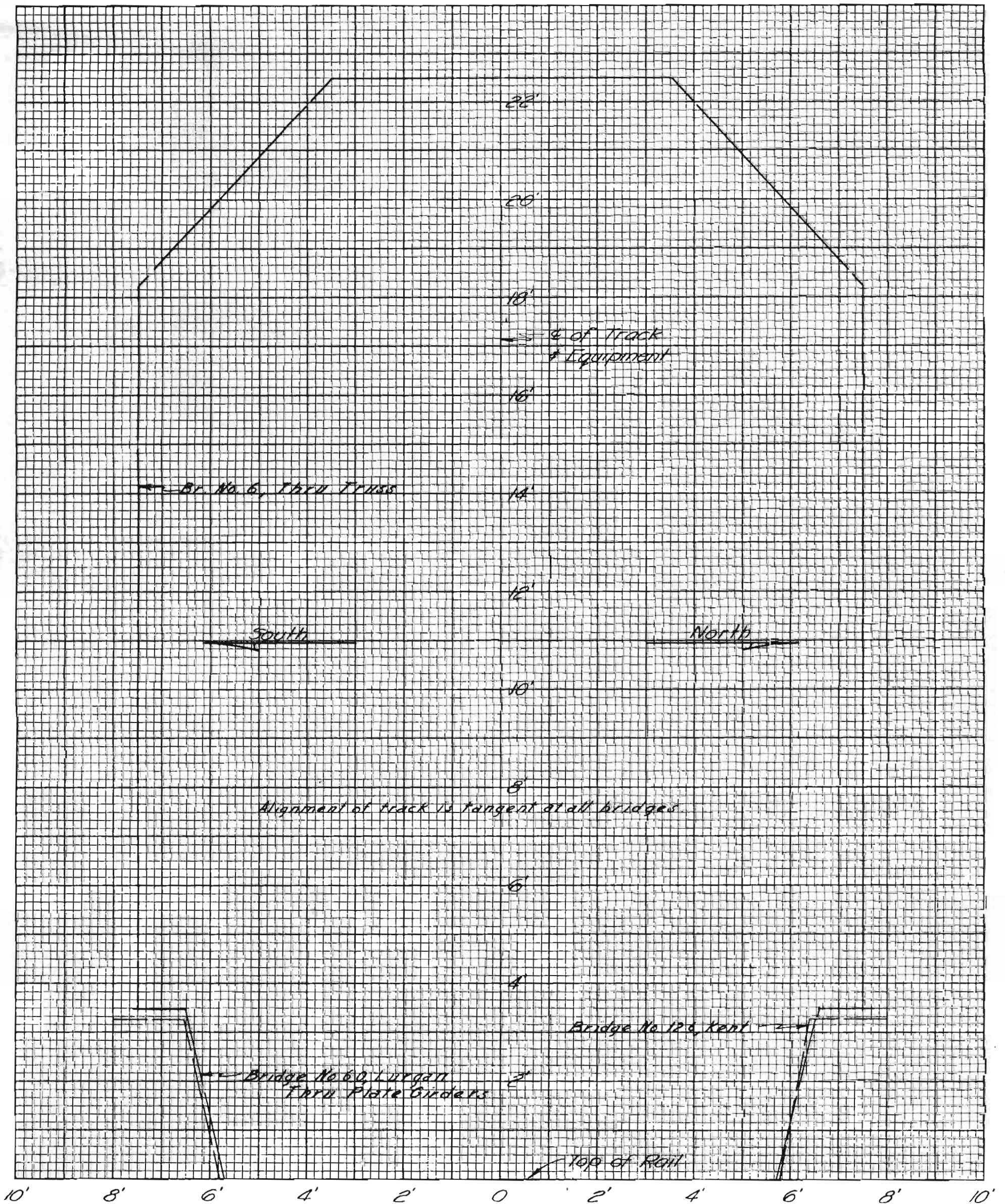
GREAT NORTHERN RAILWAY
 MINOT DIVISION
**FARGO TO NEW ROCKFORD
 CLEARANCE DIAGRAM**

OFFICE OF CHIEF ENGINEER, ST. PAUL, MINN.

CORRECTED TO

DATE PRINTED

167-5959-2



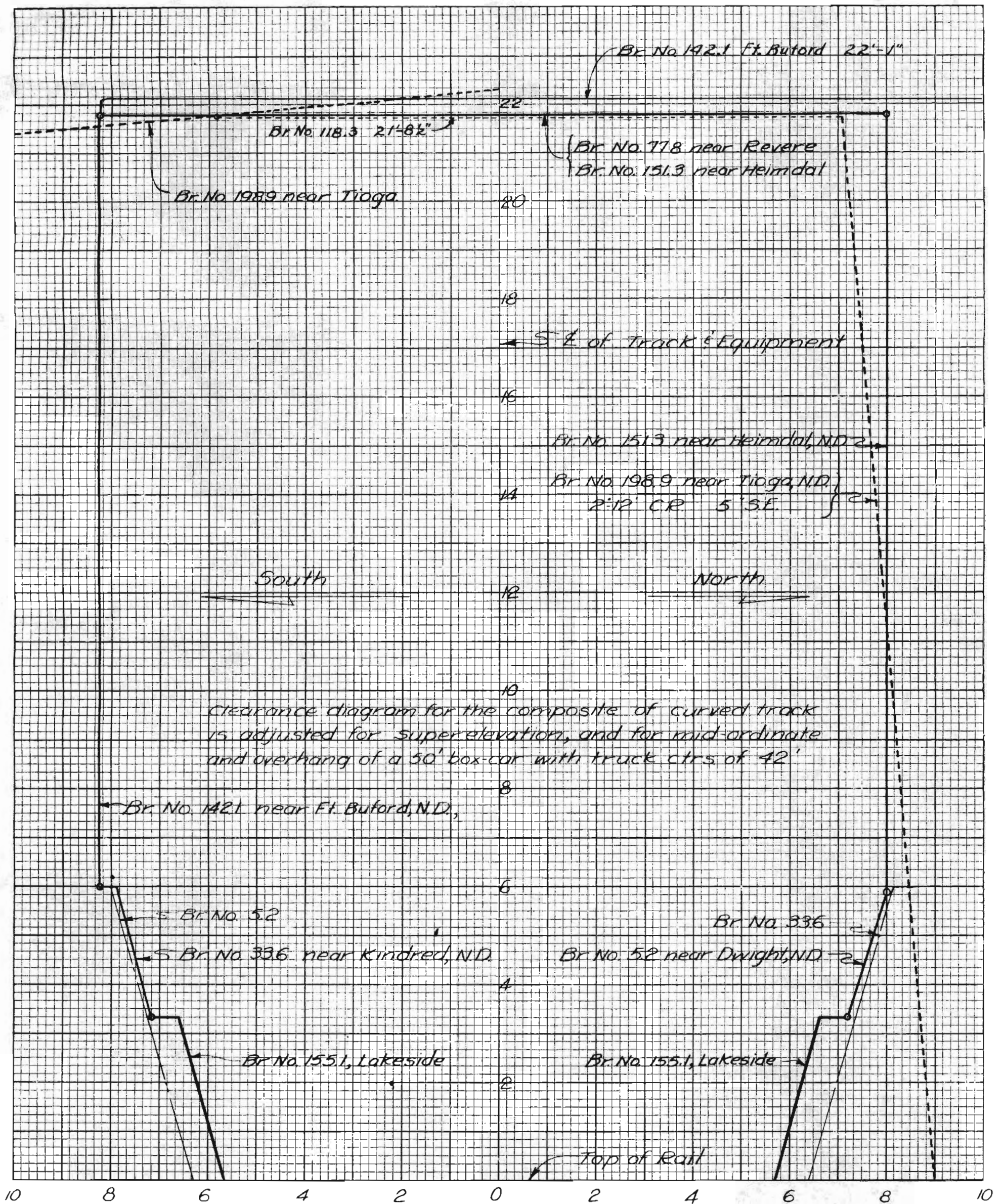
GREAT NORTHERN RAILWAY
MINOT DIVISION
**BRECKENRIDGE TO MOORHEAD
CLEARANCE DIAGRAM**

OFFICE OF CHIEF ENGINEER, ST. PAUL, MINN.

CORRECTED TO June 1961

DATE PRINTED

167-5959-1



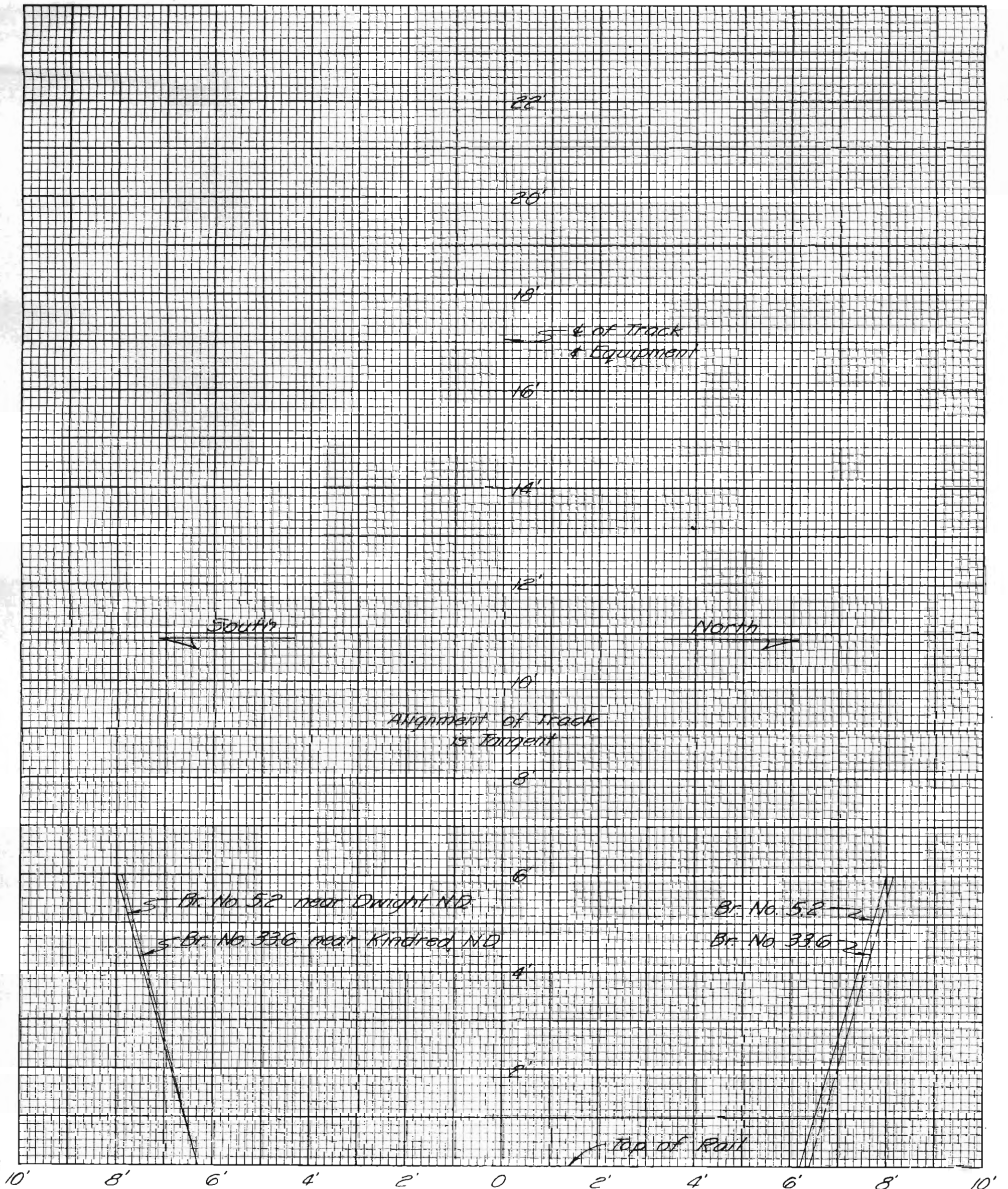
clearance diagram for the composite of curved track is adjusted for super-elevation, and for mid-ordinate and overhang of a 50' box-car with truck ctrs of 42'

NOTE: Clearance diagram is shown looking West towards Seattle.

GREAT NORTHERN RAILWAY
 MINOT DIVISION
 BRECKENRIDGE TO BAINVILLE
 VIA CASSELTON
CLEARANCE DIAGRAM

OFFICE OF CHIEF ENGINEER ST. PAUL MINN

CORRECTED TO June 1967



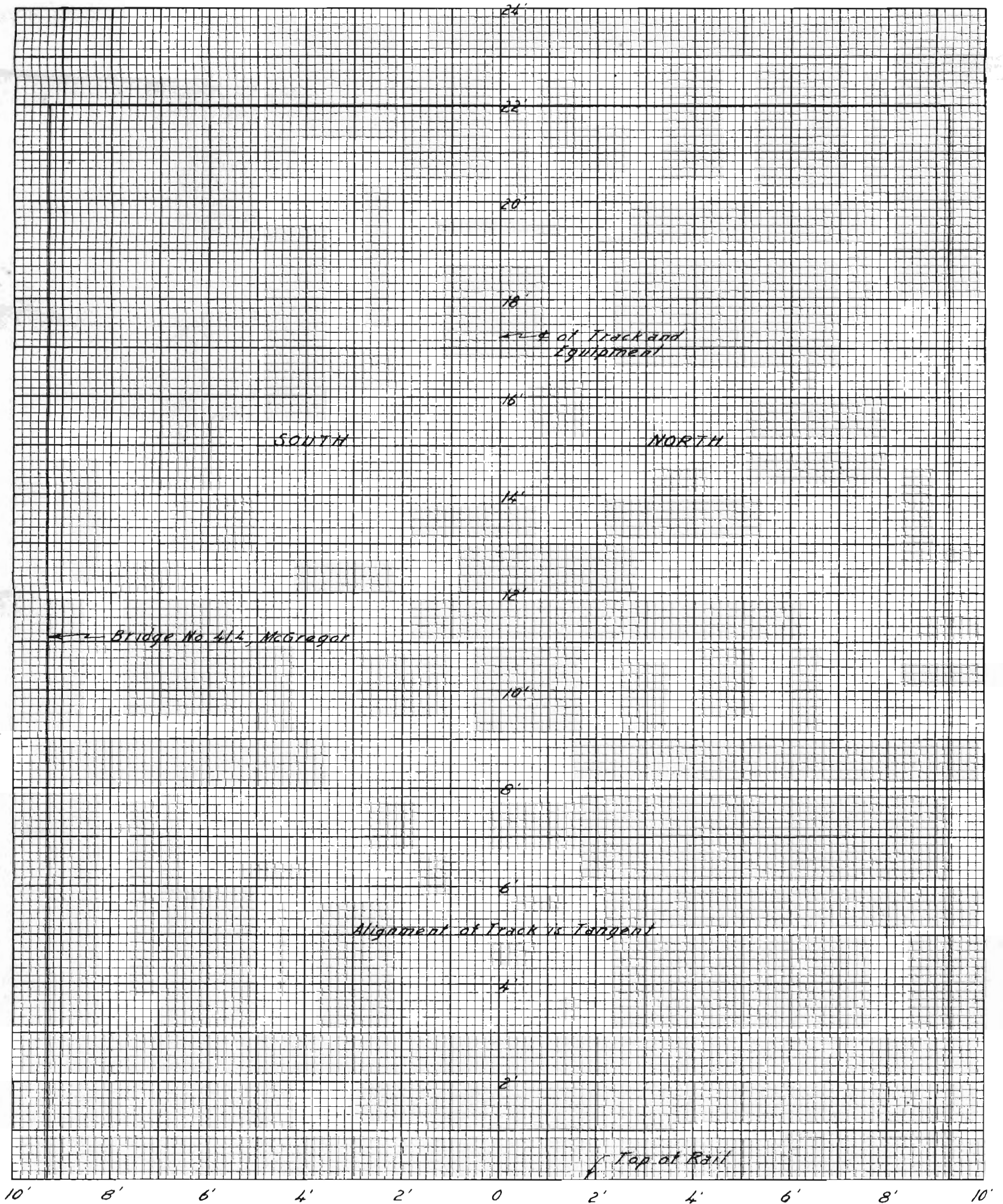
GREAT NORTHERN RAILWAY
 MINOT DIVISION
**WAHPETON TO NOLAN
 CLEARANCE DIAGRAM**

OFFICE OF CHIEF ENGINEER, ST. PAUL, MINN.

CORRECTED TO: _____

DATE PRINTED

167-5959-5



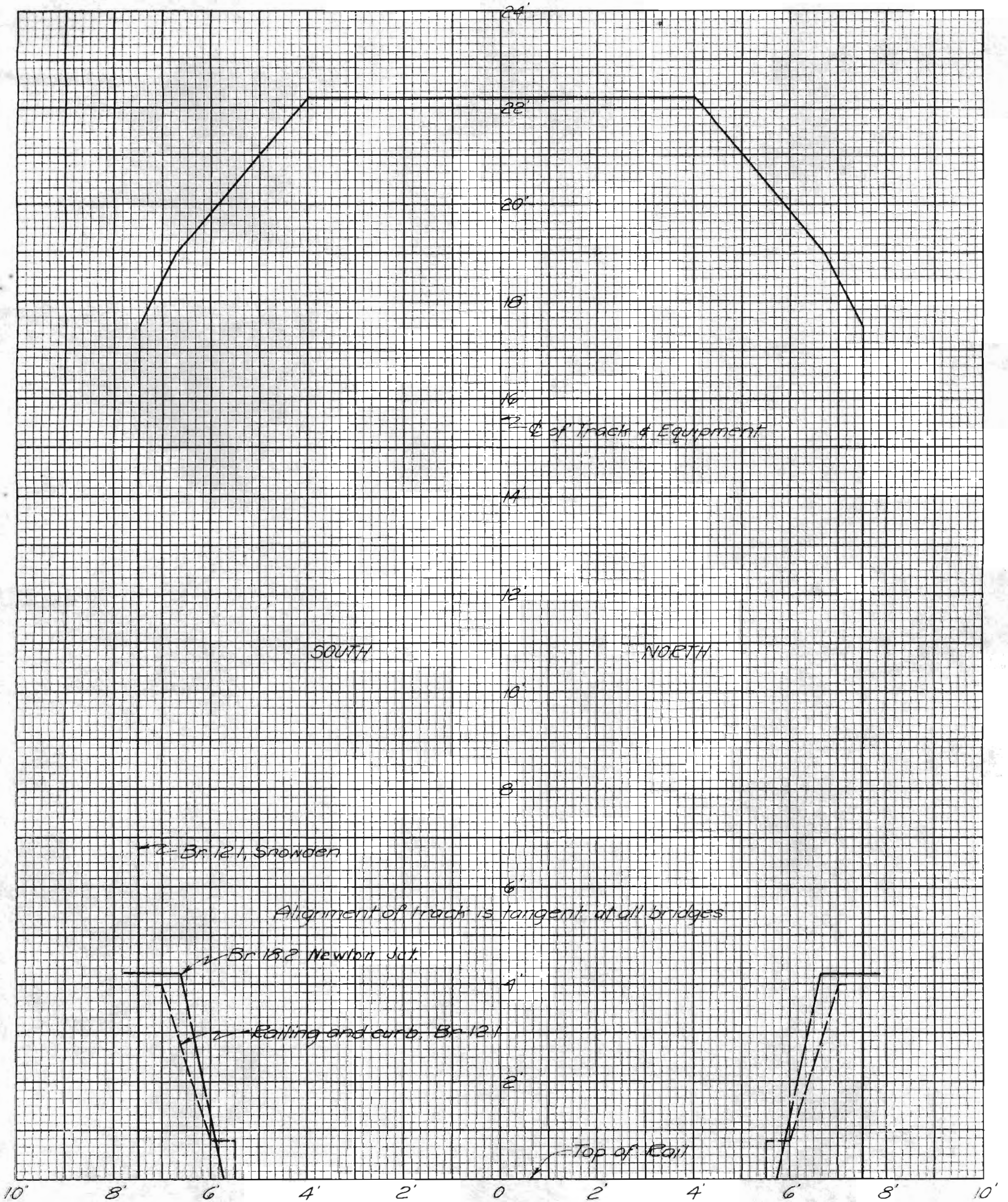
GREAT NORTHERN RAILWAY
MINOT DIVISION
**STANLEY TO GRENORA
CLEARANCE DIAGRAM**

OFFICE OF CHIEF ENGINEER, ST. PAUL, MINN.

CORRECTED TO

DATE PRINTED

167-5959-6



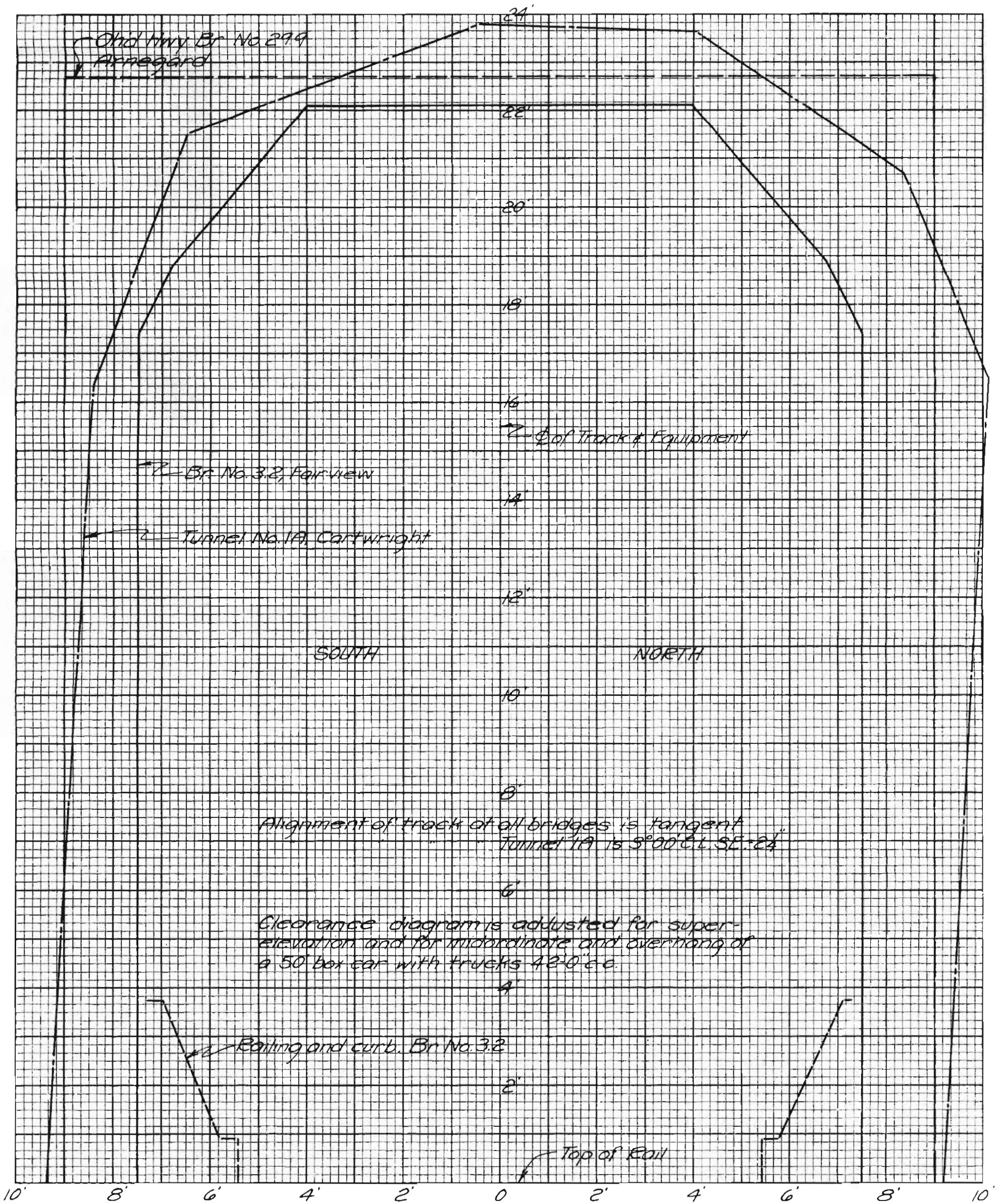
GREAT NORTHERN RAILWAY
MINOT DIVISION
SNOWDEN TO RICHEY
CLEARANCE DIAGRAM

OFFICE OF CHIEF ENGINEER ST. PAUL, MINN.

CORRECTED TO *Nov 13*

DATE PRINTED

167-5959-7



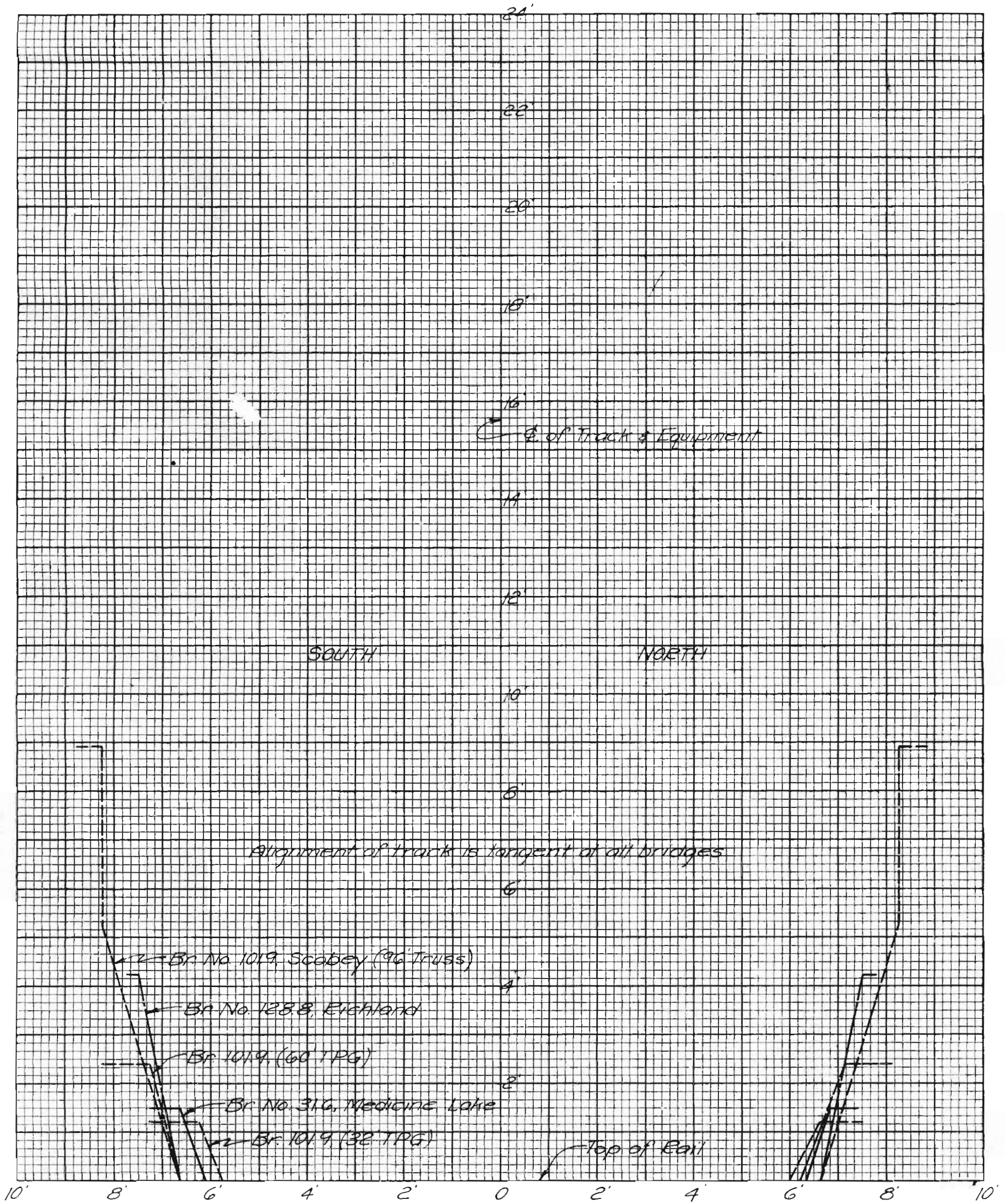
GREAT NORTHERN RAILWAY
MINOT DIVISION
FAIRVIEW TO WATFORD CITY
CLEARANCE DIAGRAM

OFFICE OF CHIEF ENGINEER ST. PAUL, MINN.

CORRECTED TO

DATE PRINTED

167-5959-8



GREAT NORTHERN RAILWAY
 MINOT DIVISION
 BAINVILLE TO OPHEIM
CLEARANCE DIAGRAM

OFFICE OF CHIEF ENGINEER ST. PAUL, MINN.

CORRECTED TO _____

DATE PRINTED

167-5959-9